



ENGINEERED
RIGGING

HEAVY LIFTING EQUIPMENT RENTALS



**Cantilever Segmental
Bridge Lift System**



Crazy Skates



Cube Jack Systems



Cylinders (Aluminum)



**Cylinders
(Double-Acting)**
HCR20010, RR308



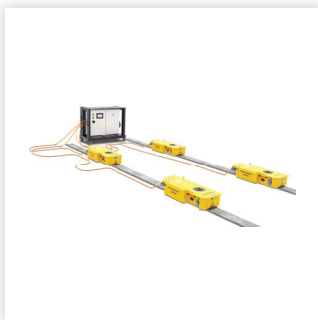
**Cylinders
(Locking)**
HCL1006, HCL1506,
HCL2006, HCL2506



**Cylinders
(Low-Height)**
RCS302, RSM30



**Cylinders
(Low-Height Locking)**
LPL602, LPL1602, LPL2002
LPL2502



Electric Trolley System



ER Load Manipulator



Gantries (Hydraulic)



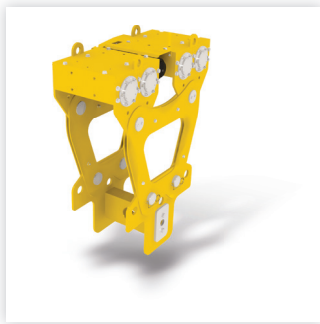
Gantry Lift Beams

**CONTACT OUR HEAVY
LIFTING EXPERTS
FOR A QUOTE!**

**JOHN KUKA
MIKE BERES
CHRISTOPHER COX, PE**

**jkuka@EngineeredRigging.com
mberes@EngineeredRigging.com
ccox@EngineeredRigging.com**

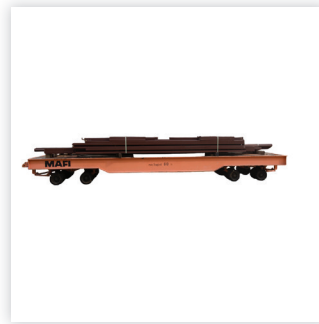
**844.474.4448 ext. 100
844.474.4448 ext. 104
844.474.4448 ext. 102**



Gantry Side Shift Systems



Gantry Track



Heavy Load Carts



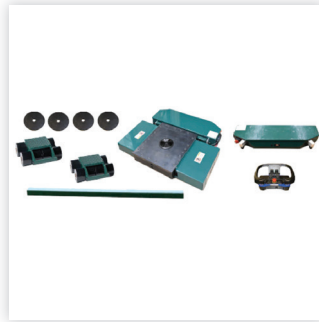
Hilman PowerAttack Drive Bar



Hilman Rollers



Hilman TK50 Trakporter



Hilman TK-EVO Battery Powered Skates



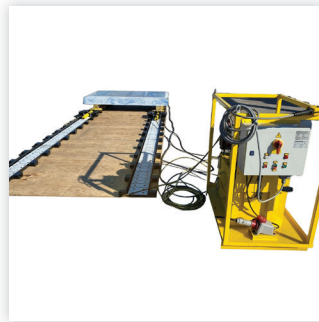
Jack-Up System



Knuckle Boom Systems



Load Stools



Low-Height Skidding Systems



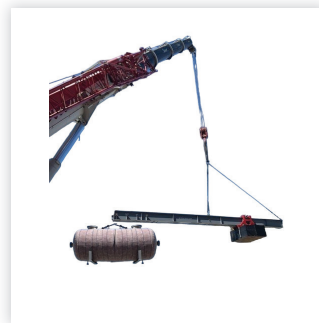
Mechanical Locking Lift Tower



Pipe End Lift Caps & Spreader Bars



Power Slide System



Reach Beam System



SPMT & Platform Trailers

CONTACT OUR HEAVY LIFTING EXPERTS FOR A QUOTE!

**JOHN KUKA
MIKE BERES
CHRISTOPHER COX, PE**

**jkuka@EngineeredRigging.com
mberes@EngineeredRigging.com
ccox@EngineeredRigging.com**

**844.474.4448 ext. 100
844.474.4448 ext. 104
844.474.4448 ext. 102**



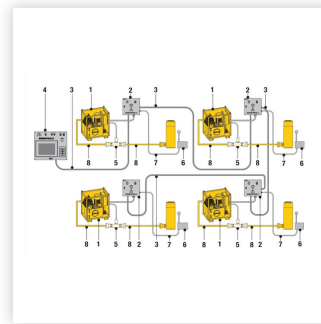
Shackles



Slings



Sling Adjuster Systems



**Split-Flow
Network System**



Split-Flow Pumps



**Strand Coils
(Pre-Stressed)**



Strand Jacks



**Toe Jacks
HTJ-10D**



Turntable

**CONTACT OUR HEAVY
LIFTING EXPERTS
FOR A QUOTE!**

**JOHN KUKA
MIKE BERES
CHRISTOPHER COX, PE**

**jkuka@EngineeredRigging.com
mberes@EngineeredRigging.com
ccox@EngineeredRigging.com**

**844.474.4448 ext. 100
844.474.4448 ext. 104
844.474.4448 ext. 102**



INVENTORY

STRAND JACKS

| | |
|---|--------|
| 900-ton HSL2000 Strand Jack System (225 tons each) | Qty. 5 |
| 316-ton HSL700 Strand Jack System (79 tons each) | Qty. 2 |
| 68-ton HSL150 Strand Jack System (17 tons each) | Qty. 3 |
| 250-ton Cantilever Segmental Bridge Lift System | Qty. 1 |
| Pre-Stressed Strand Coils (15.7 mm and 18 mm) | |
| Accessories: Dispensers, Re-coilers & Strand Guides | |

TROLLIES, SLIDING, SKIDDING & TURNING

| | |
|--|-----------|
| 400-ton ETR100H Electric Trolley System with Integrated Lift Cylinders | Qty. 1 |
| 500-ton PS-500 Power Slide System with 114' of track | Qty. 2 |
| 300-ton PS-300 Power Slide System with 114' of track | Qty. 1 |
| 400-ton LH400 Low-Height Skidding System | Qty. 3 |
| Low-Height Skid Track | Qty. 340' |
| 450-ton ETT400 Turntable with Hydraulic Pump | Qty. 1 |

SLING ADJUSTERS (SYNCHOISTS)

| | |
|--|--------|
| 1,480-ton SHC4370 Sling Adjuster & Pump System (370 tons each) | Qty. 1 |
| 440-ton SHS4110 Sling Adjuster & Pump System (110 tons each) | Qty. 1 |

HYDRAULIC GANTRIES

| | |
|---|-----------|
| 1,100-ton SBL1100 Gantry System | Qty. 1 |
| 550-ton SBL500 Gantry System | Qty. 1 |
| 400-ton SL400 Gantry System | Qty. 1 |
| 66-ton SL60 Gantry System | Qty. 2 |
| 660-ton SSU600 Side-Shift System | Qty. 1 |
| 330-ton SSU300 Side-Shift System | Qty. 1 |
| Gantry Track: GST400 Heavy-Duty (3'W x 15"H) | Qty. 128' |
| Gantry Track: GST100 Light-Duty (2'W x 8"H) | Qty. 188' |
| Accessories: Lift Beams & Adjustable Lift Links | |

LIFTING & STORAGE

| | |
|--|---------|
| 50-ton Load Stools (4'x4'x4') | Qty. 24 |
| 150-ton Load Stools (4'x4'x4') | Qty. 24 |
| Various Slings & Shackles up to 600 tons | |
| Various Pipe End Lift Caps and Spreader Bars | |

SPMITS, KB CRANES, POWERED DOLLIES & SKATES

| | |
|--|---------|
| Enerpac SPMT / In-Plant Transporter 4x3-lines, 2xPPU, 22-ton/line, 7.5' width with cushion tires | Qty. 1 |
| Goldhofer SPMT / PST-SL-E Transporter 2x 6-lines, 1xPPU, 45-ton/line, 10' width with E-steering | Qty. 1 |
| 65-ton KBS65 Knuckle Boom System with custom base | Qty. 4 |
| 30-ton LM30 Load Manipulator with Powered Drive | Qty. 1 |
| 30-ton TK-EVO Hilman PowerAttack Drive Bar | Qty. 2 |
| 50-ton TK50 Hilman Traksporter | Qty. 1 |
| 40-ton Hilman TK-EVO Battery Powered Skates | Qty. 1 |
| 6-ton Omni Skates | Qty. 15 |
| 10-ton Crazy Skates | Qty. 10 |
| 15-ton Hilman Rollers | Qty. 30 |
| Reach Beam Systems (20, 8.5 and 5-ton capacities) | Qty. 3 |
| 60-ton Heavy Load Carts | Qty. 2 |

JACKING, CLIMBING, PUMPS & WEIGHING

| | |
|--|---------|
| 2200-ton JS500 Jack-Up System | Qty. 1 |
| Split-Flow Pumps 10,000 psi with 4-ports | Qty. 6 |
| Split-Flow Network System (max. 16-points per system) | Qty. 1 |
| 600-ton Climbing Jack System (150-tons each) | Qty. 1 |
| 400-ton Cube Jack System (100 tons each) | Qty. 1 |
| 200-ton Cube Jack System (50 tons each) | Qty. 2 |
| Mechanical-Locking Lift Tower (15-ton capacity per post) | Qty. 24 |
| 60 to 250-ton HD Locking Low-Height Cylinders | Qty. 12 |
| 100 to 250-ton Locking 6" Stroke Cylinders | Qty. 20 |
| Various Single Acting and Double Acting Cylinders | |
| 10-ton Toe Jacks | Qty. 6 |

CUSTOM ACCESSORIES

Fabricated in our Arkansas facility to meet your specific needs. Please call 844.474.4448 to share your specifications.

CONTACT OUR HEAVY LIFTING EXPERTS FOR A QUOTE!

**JOHN KUKA
MIKE BERES
CHRISTOPHER COX, PE**

**jkuka@EngineeredRigging.com
mberes@EngineeredRigging.com
ccox@EngineeredRigging.com**

**844.474.4448 ext. 100
844.474.4448 ext. 104
844.474.4448 ext. 102**